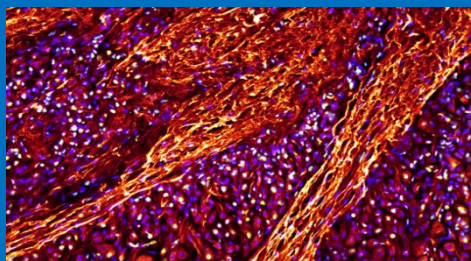


Functional Area of Physiology and Behavior









Histology



The **Histology** platform is equipped with instruments utilized for the preparation of histological samples. The instruments available allow the inclusion of biological samples in paraffin, resin or optimal cutting temperature compound (OCT) and the cutting of sections of various thickness through the use of vibratome, cryostat and microtome.

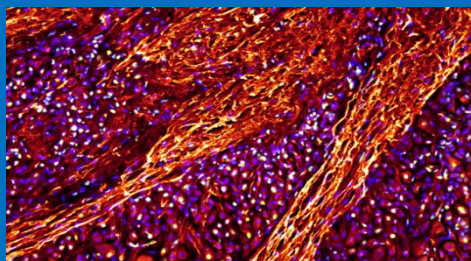
First Floor - EAST Wing, #149, #150

Manager: *Pamela Imperadore*
pamela.imperadore@szn.it

Bookable instruments	Description	
Cryostat LEICA CM3050 S	This cryostat is used to cut histological slides (frozen section histology). It is a rotary microtome placed in a freezer. The temperature can be varied, depending on the tissue being cut - usually from - 20 to -30° C.	
Paraffin Rotary Microtome LEICA RM2245	The instrument is a semi-motorized rotary microtome utilized for paraffin sections.	
Paraffin Oven BINDER VD115	This histology oven, equipped with a VACUUBRAND vacuum pump, is useful for dissolving paraffin and keeping it in a liquid state; also used for the inclusion of samples.	
Dissection and Sorting Table	Dissection table equipped with two stereomicroscopes, one of which is didactic, at low magnification.	
Vibratome LEICA VT1200S	Vibrating blade microtome for high quality sectioning, can be used in semi- or fully automated mode.	
Sliding Microtome LEICA SM2010R	The instrument produces high quality sections for routine histopathology (paraffin), neuroscience (fixed frozen brain) and industrial applications (foam and wood).	
Microarray Scanner MOLECULAR DEVICE GenePix 4100A	Optimal high resolution scanner for very high density microarray. This scanner acquires data at user-selectable resolutions between 2.5 and 100 µm per pixel.	
Benchtop Laminar Flow Cabinet BIOAIR	It is a partially recirculating downflow cabinet. The laminar flow is equipped with a UV light.	

Functional Area of Physiology and Behavior







Histology



The **Histology** platform is equipped with instruments utilized for the preparation of histological samples. The instruments available allow the inclusion of biological samples in paraffin, resin or optimal cutting temperature compound (OCT) and the cutting of sections of various thickness through the use of vibratome, cryostat and microtome.

First Floor - EAST Wing, #149, #150

Manager: *Pamela Imperadore*
pamela.imperadore@szn.it

Bookable instruments	Description	
Chemical Fume Hood - Histology sample preparation	Chemical hood intended for the preparation and processing of histological samples (e.g., fixation of samples for histology, staining)	
Refrigerated Incubator Shaker NEW BRUNSWICK SC.Innova 4230	The Innova 4230 Refrigerated/Heated Incubator Shaker has the capability to heat or refrigerate. Temperatures in this refrigerated/heated incubator shaker can be set from a minimum of 4°C to maximum of 75°C.	
Microplate Photometer Thermo Fisher Scientific Multiskan™ FC	The instrument measure absorbance in 96-well plates. It is recommended for Immunoassays (ELISA), protein assays, endotoxins, cytotoxicity and proliferation assays, enzyme assays, growth curves.	
Macroscope Leica Z16 APO	The Leica Z16 APO is a fully apochromatic zoom system for high contrast, high-resolution, detailed analysis. The single beam path provides 2D images and ensures parallax-free imaging.	
Refrigerated Centrifuge Eppendorf 5810 R	The Eppendorf 5810 R refrigerated centrifuge is equipped with tilting rotors and adapters that allow to accommodate test tubes of various sizes, from 0.2 mL to 50 mL.	
Refrigerated Centrifuge Beckman Coulter Allegra 21R	The Allegra 21R is a compact benchtop centrifuge reaching speeds up to 15,300 rpm and has a temperature range of -20° to 40°C.	
Laboratory Oven	Oven with a temperature range between 50 and 350°C.	